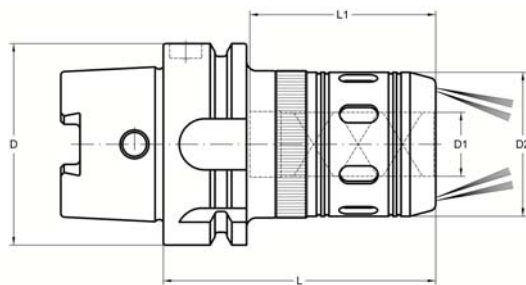


- Without o-ring, rings, washers, etc.
- Coolant directed to the cutting tool.
- 8 coolant exits with different directions to assure correct cooling of the cutting tool.
- No pressure limit.

DIN 69893-HSK

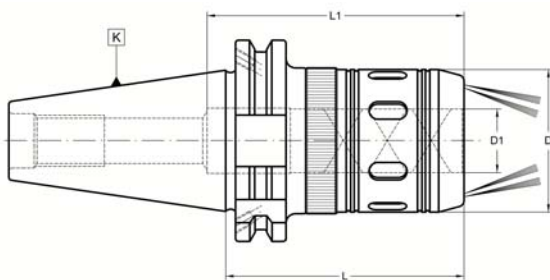


D HSK-A	D ₁ máx.	L	L ₁	D ₂	COD.
63	20	85	60	46	004 14 25 04 04
63	32	110	80	62	004 14 25 04 06
100	32	115	80	62	004 14 25 06 06

- Maximum circular deviation between outer taper and collet housing: $\leq 0,003$ mm.

- HSK-A63 Balanced according to ISO 1940-1 to 15.000 r.p.m.
- HSK-A100 Balanced according to ISO 1940-1 to 10.000 r.p.m.

DIN 69871-(AD+B)

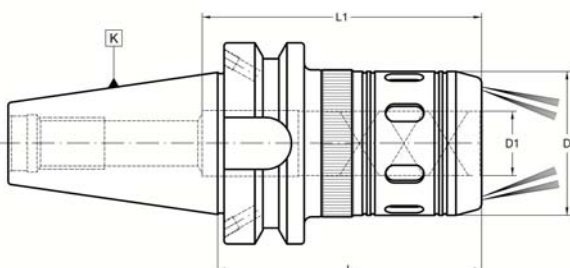


K	D ₁ máx.	L	L ₁	D	COD.
40	20	75	60	46	004 33 25 02 04
40	32	100	80	62	004 33 25 02 06
50	32	85	80	62	004 33 25 04 06

- Maximum circular deviation between outer taper and collet housing: $\leq 0,003$ mm.

- K-40 Balanced according to ISO 1940-1 to 15.000 r.p.m.
- K-50 Balanced according to ISO 1940-1 to 10.000 r.p.m.

MAS 403-BT-(AD+B)



K	D ₁ máx.	L	L ₁	D	COD.
40	20	80	60	46	004 32 25 02 04
40	32	85	75	62	004 32 25 02 06
50	32	100	80	62	004 32 25 04 06

- Maximum circular deviation between outer taper and collet housing: $\leq 0,003$ mm.

- K-40 Balanced according to ISO 1940-1 to 15.000 r.p.m.
- K-50 Balanced according to ISO 1940-1 to 10.000 r.p.m.