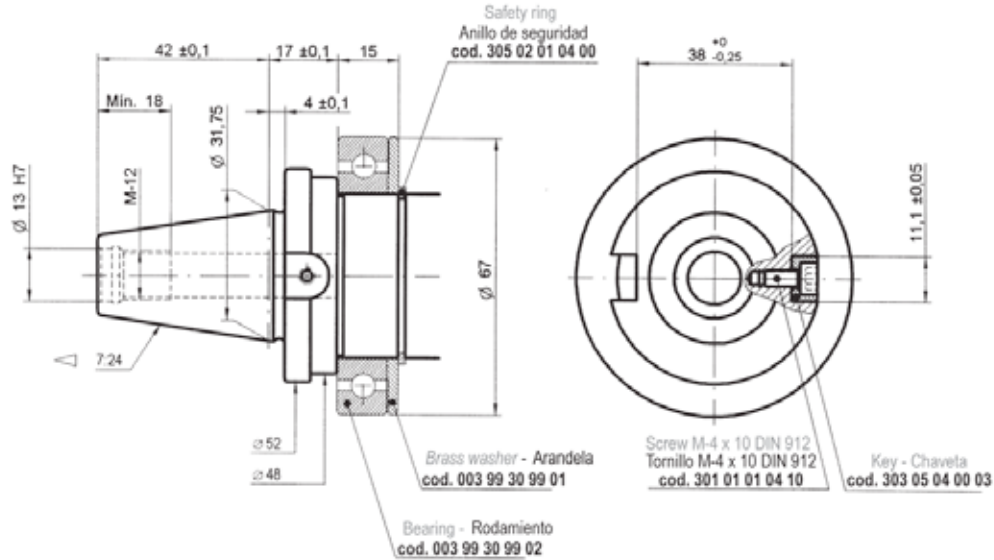


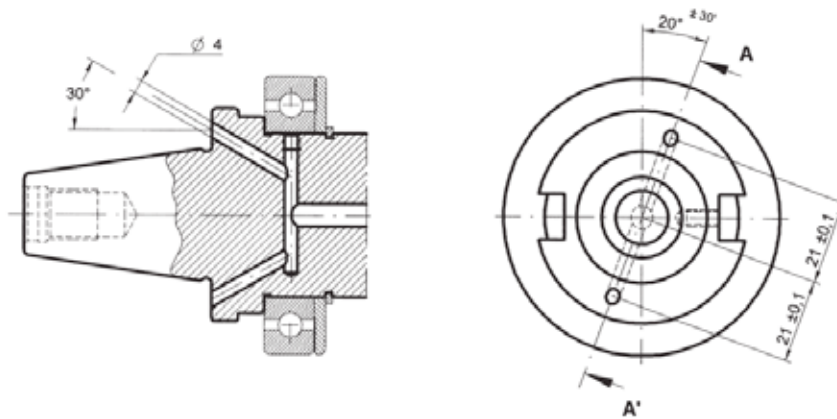


... 30

CHIRON TAPER
CONO CHIRON



FORM B - FORMA B



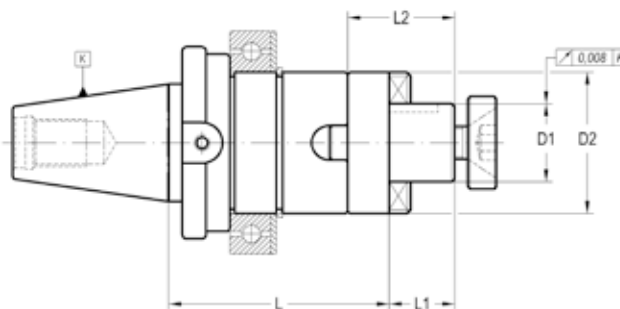
	UNIVERSAL ARBORS PORTAFRESAS COMBINADO	215		COLLET CHUCKS ER TYPE (DIN 6499) PORTAPINZAS TIPO ER (DIN 6499)	218
	REDUCING ADAPTERS TO MORSE For tapered Morse taper tools DIN 228-B or with thread DIN 228-A REDUCTORES A MORSE Para herramientas con lengüeta DIN 228-B o rosca de tiro DIN 228-A	216		WELDON AND WHISTLE-NOTCH HOLDERS PORTAFRESAS WHISTLE-NOTCH Y WELDON	219
	BASIC ADAPTERS FOR MODULAR TOOLING ADAPTADORES PARA UTILLAJE MODULAR	216		SHORT DRILL CHUCKS PORTABROCAS INTEGRAL	220
	COLLET CHUCKS DIN 6388 PORTAPINZAS DIN 6388	217		QUICK-CHANGE TAPPING CHUCKS For Bilz system tap adapter PORTAMACHOS Para sistemas BILZ	220

001 30 02

UNIVERSAL ARBORS PORTAFRESAS COMBINADO



For milling cutters with longitudinal or tenon drive DIN 138.
Para fresas con chavetero longitudinal o transversal DIN 138.



K	D1 h6	L	L1	L2	D2	COD. Form A
30	16	60	17	27	32	001 30 02 01 30
30	22	60	19	31	40	001 30 02 01 40
30	27	60	21	33	48	001 30 02 01 50

ACCESSORIES INCLUDED *Page: 293* ACCESORIOS INCLUIDOS

D ₁			
16	001 99 02 01 30	001 99 01 22 30	001 99 01 12 30
22	001 99 02 01 40	001 99 01 22 40	001 99 01 12 40
27	001 99 02 01 50	001 99 01 22 50	001 99 01 12 50

OPTIONAL ACCESSORIES *Page: 293* ACCESORIOS OPCIONALES

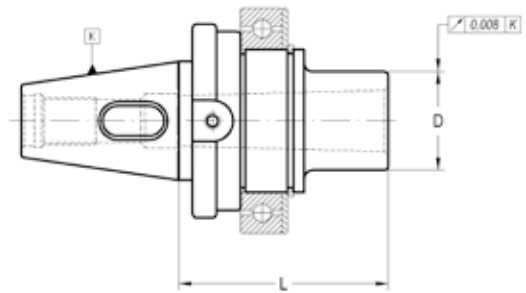
D ₁			
16	001 99 03 02 30	001 99 01 01 30	001 99 04 01 30
22	001 99 03 02 40	001 99 01 01 40	001 99 04 01 40
27	001 99 03 02 50	001 99 01 01 50	001 99 04 01 50

003 30 12 ...

REDUCING ADAPTERS TO MORSE REDUCTORES A MORSE



For tanged Morse taper tools DIN 228-B or Morse taper tools with thread DIN 228-A.
Para herramientas con lengüeta DIN 228-B o rosca de tiro DIN 228-A.



K	K1	L	D	COD. Form AD	* 
30	1	50	25	003 30 12 01 20	003 99 30 01 20
30	2	62	32	003 30 12 01 30	003 99 30 01 30
30	3	80	40	003 30 12 01 40	003 99 30 01 40

RELATIONATED ELEMENTS Page: 196
ELEMENTOS RELACIONADOS

* The pull stud is for tools with tightening thread DIN 228-A.
* El tirante es necesario para utilizar herramientas con rosca de tiro DIN 228-A.



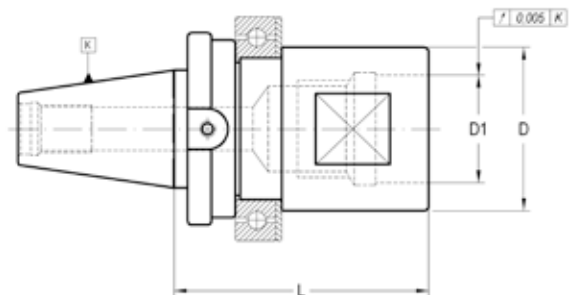
003 02 11 ...

003 30 54 ...

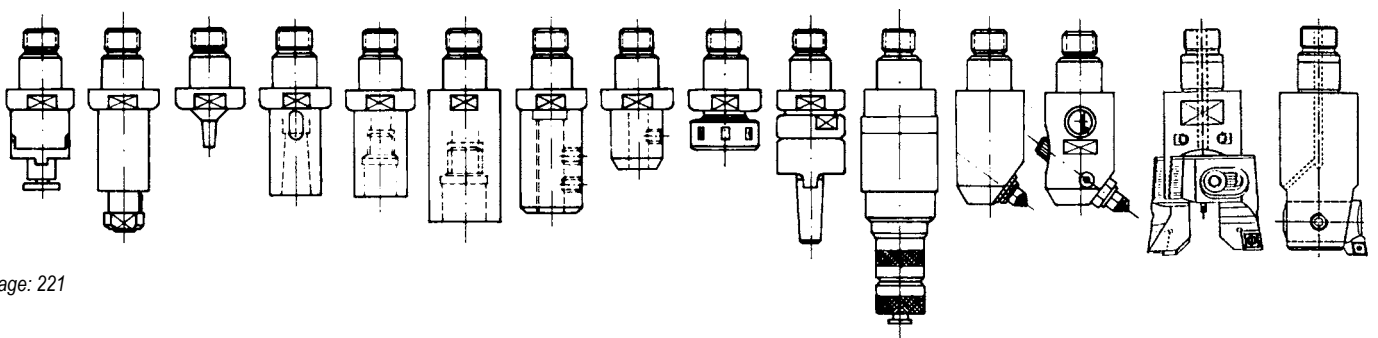
BASIC ADAPTERS FOR MODULAR TOOLING ADAPTADORES PARA UTILLAJE MODULAR



Interchangeable with C.O. system.
Intercambiable con el sistema C.O.



K	D1 H5	D	L	L1	COD.			
30	30	46	80	48	003 30 54 01 06	351 30 00 01 01	001 99 03 01 55	305 02 01 03 20

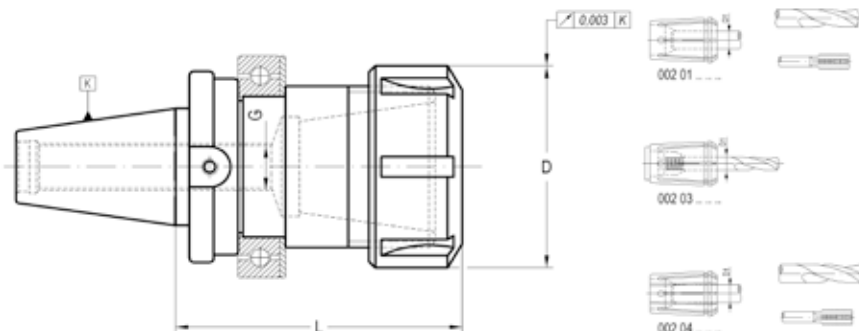


004 30 01

COLLET CHUCKS DIN 6388 PORTAPINZAS DIN 6388



For tools with cylindrical straight shank DIN 1835-A or threaded cylindrical shank DIN1835-D.
Para herramientas con mango cilíndrico liso ISO 1835-A o cilíndrico roscado DIN1835-D.



K	D1 max	L	D	G	COD. Form AD			
30	25	99	60	M-12	004 30 01 01 05	351 30 00 01 01	001 99 03 01 55	305 02 01 03 20

- Circular deviation between outer taper and collet housing $\leq 0,003$
- Provided with bearing nut.

- Desviación circular entre cono exterior e interior $\leq 0,003$
- Se suministra con tuerca de rodamientos.

RELATIONATED ELEMENTS *Page: 269* ELEMENTOS RELACIONADOS



ACCESSORIES INCLUDED: Bearing nut *Page: 293* ACCESORIOS INCLUIDOS: Tuerca con rodamiento



OPTIONAL ACCESSORIES *Page: 293* ACCESORIOS OPCIONALES

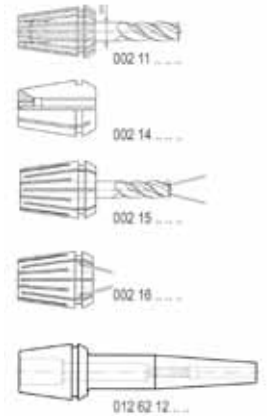
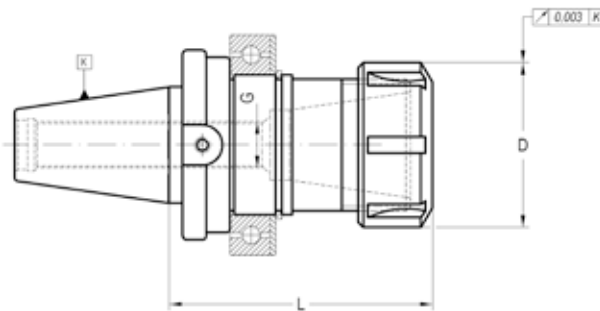


004 30 06

COLLET CHUCKS ER TYPE (DIN 6499) PORTAPINZAS TIPO ER (DIN 6499)

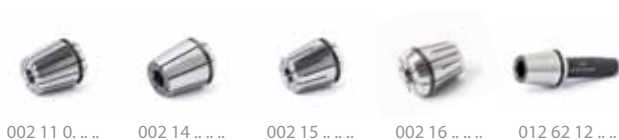


For tools with cylindrical straight shank DIN 1835-A.
Para herramientas con mango cilíndrico liso DIN 1835-A.



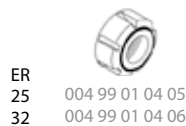
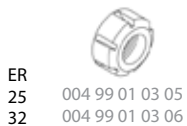
K	Size	D1 max	L	D	G	COD. Form AD
30	(ER-25)	16	75	42	M-12	004 30 06 01 05
30	(ER-32)	20	80	50	M-12	004 30 06 01 06

RELATIONATED ELEMENTS *Page: 269* ELEMENTOS RELACIONADOS

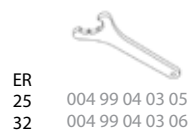


ACCESSORIES INCLUDED *Page: 293* ACCESORIOS INCLUIDOS

Conventional/Convencional or/o Bearing shell nut/Con casquillo giratorio



OPTIONAL ACCESSORIES *Page: 293* ACCESORIOS OPCIONALES



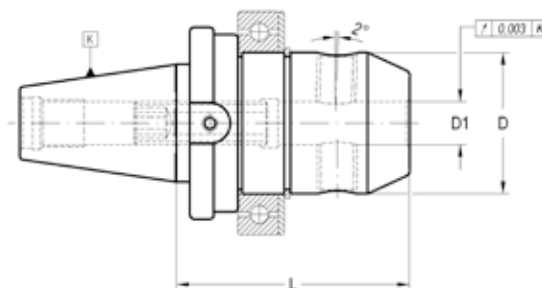
012 30 04



WELDON AND WHISTLE-NOTCH HOLDERS PORTFRESAS WHISTLE-NOTCH Y WELDON



For end mills with shank DIN 1835-B and / or DIN 1835-E.

Para fresas con mango cilíndrico con encaste DIN 1835-B y/o plano inclinado DIN 1835-E.



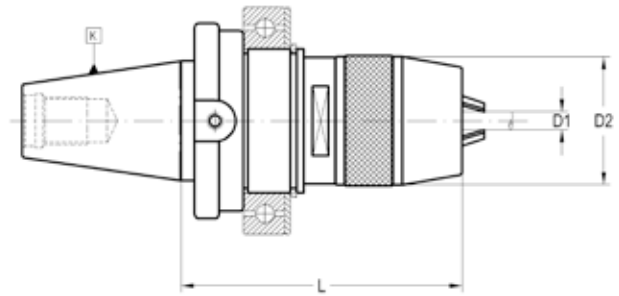
K	D1	L	D	COD. Form AD		
30	6	60	25	012 30 04 11 06	301 02 70 12 01	301 01 05 06 10
30	8	60	28	012 30 04 11 08	301 02 70 12 01	301 01 05 08 10
30	10	65	35	012 30 04 11 10	301 02 70 12 01	301 01 05 10 12
30	12	65	40	012 30 04 11 12	301 02 70 12 01	301 01 05 12 16
30	14	65	40	012 30 04 11 14	301 02 70 12 01	301 01 05 12 16
30	16	70	40	012 30 04 11 16	301 02 70 12 01	301 01 05 14 16
30	18	70	40	012 30 04 11 18	301 02 70 12 01	301 01 05 14 16
30	20	70	40	012 30 04 11 20	301 02 70 12 01	301 01 05 16 16

- D1 ≥ 25 mm: two clamping holes.

- D1 ≥ 25mm: con dos orificios para sujeción de herramienta.

012 30 09

SHORT DRILL CHUCKS PORTABROCAS INTEGRAL



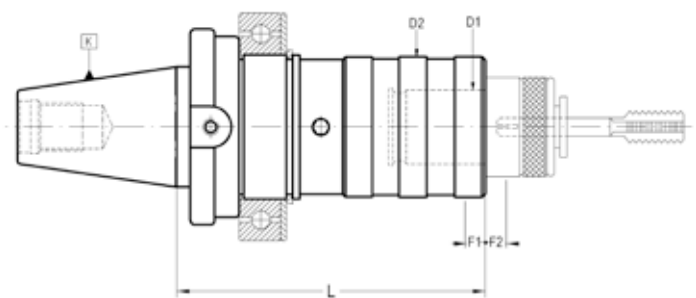
K	D1	L	D2	COD. Form AD			
30	0-8	87	36	012 30 09 11 08	351 02 60 00 08	351 02 61 00 08	020 99 03 00 08

019 30 52

QUICK-CHANGE TAPPING CHUCKS PORTAMACHOS DE CAMBIO RÁPIDO



With self feed and compression system. For BILZ system tap adapter.
Doble compensación axial. Para adaptadores sistema BILZ.



K	Cap.	D1	L	D2	F1	F2	COD. Form A
30	M3-M12 (M-16)*	19	77	36	7,5	7,5	019 30 52 01 02

- F1 Compression run.
- F2 Extension run.
* With 002 22 and 002 24 Adapters

- F1 Recorrido de compresión.
- F2 Recorrido de extensión.
* Con adaptadores 002 22 y 002 24

RELATED ELEMENTS Page: 278
ELEMENTOS RELACIONADOS

